

ROOFCONSULT

www.roofconsult.ltd.uk

Roofconsult was set up in 2001 by the current managing director David Roy, as an independent roofing and cladding consultancy specialising in flat roofing and metal sheeting & cladding. The company was incorporated in 2003.

Recent clients include Ash & Lacy Building Systems Ltd, Bowmer & Kirkland Ltd, Britvic Soft Drinks Ltd, Elliot Group, Kier Build, Lakesmere Ltd, Lloyds TSB Plc, Tishman Speyer Properties & Tubes Lines Ltd

Services offered include:

Design Calculations:

- Wind loading and fixing requirements
- Roof drainage and gutter design
- U value and thermal bridging to comply with Part L
- Condensation risk analysis
- Snow loading
- Product suitability
- Light gauge profiles & composite panel structural design

Technical:

- Technical seminars
- Product and system evaluation
- Project audits, both at tender stage, and during design and construction.
- Site investigations into failures and reports on appropriate remedial actions

IT

- Website design
- Microsoft Access & Excel applications

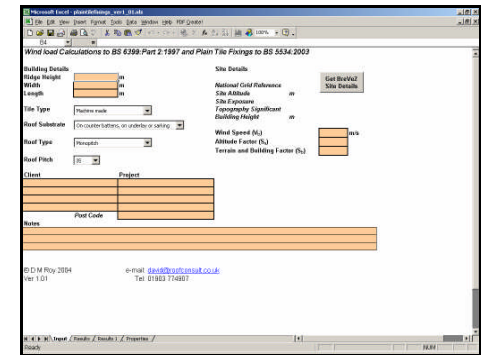
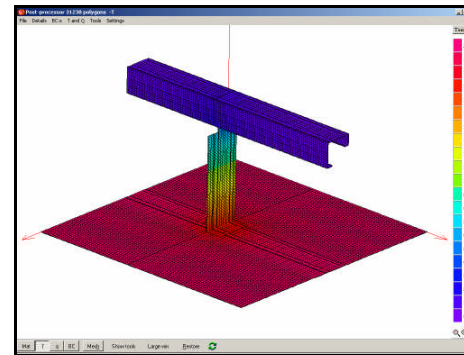
David Roy

For over twenty years, David was a member of the technical department of a major national roofing and cladding contractor, for five years as Technical Director.

His responsibilities included monitoring and maintaining the Quality System for the company, representing the company on the Flat Roofing Alliance technical committee and the National Federation of Roofing Contractors sheeting & cladding committee.

He was also a member of a number of British Standard committees, including BS6229, flat roofing and BS5427 sheeting and cladding.

David is a Fellow of Institute of Roofing and was technical advisor on "Tarmac Flat Roofing a Guide to Good Practice", and joint author "Ruberoid Flat Roofing a Guide to Good Practice" published in 1995.



Roofconsult Limited
9 Woodlands Close
Angmering
West Sussex
BN16 4NA

Tel: 01903 774907

Fax: 01903 774907

Mobile: 07813 567265

Email: david@roofconsult.co.uk

Web Site www.roofconsult.ltd.uk

VAT No: 781 5632 14