

ROOFCONSULT

www.roofconsult.ltd.uk

Roofconsult was set up in 2001 by the current managing director David Roy, as an independent roofing and cladding consultancy. The company now specialises in design calculations for the UK roofing and cladding industry. The company was incorporated in 2003. Roofconsult is a member of the Metal Cladding and Roofing Manufacturers Association (MCRMA) Industry Support Services group.

Services offered include:

Design Calculations:

- Wind loading and fixing requirements
- Roof drainage and gutter design
- U value and thermal bridging to comply with Part L
- Condensation risk analysis
- Snow loading
- Product suitability
- Light gauges steel structural supports

Software

Roofconsult has developed aids to the use of relevant British Standards including Roofwind & Roofdrain spreadsheets.

Recent clients include

- M&C Roofing Contractors Ltd
- Chemplas Ltd
- Gilbert Ash Limited
- K G M Roofing
- AccuRoof
- The Bush Consultancy Limited
- ABS Elbow Ltd
- MFDS Ltd
- Architectural Profiles Ltd

David Roy – Managing Director

For over twenty years, David was a member of the technical department of a major national roofing and cladding contractor, for five years as Technical Director.

His responsibilities included monitoring and maintaining the Quality System for the company, representing the company on the Flat Roofing Alliance technical committee and the National Federation of Roofing Contractors sheeting & cladding committee.

He was also a member of a number of British Standard committees, including BS6229, flat roofing and BS5427 sheeting and cladding.

David is a Fellow of Institute of Roofing and was technical advisor on "Tarmac Flat Roofing a Guide to Good Practice", and joint author "Ruberoid Flat Roofing a Guide to Good Practice" published in 1995.

Ben Morris – Technical Manager

Ben joined Roofconsult in May 2025, bringing over 17 years of experience in the roofing and cladding industry.

Ben originally qualified as an Architectural Technician before progressing to Design Manager roles with mid-sized roofing and cladding contractors.

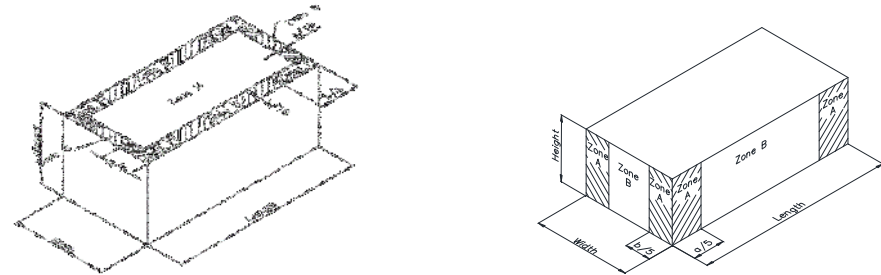
His background combines technical expertise with a wealth of experience with cladding design and details and vast knowledge with suppliers and manufacturer's products.

Roofconsult Limited
126A Stein Road
P010 8LT
Telephone: 07813 567265
Email: roofconsult.ltd@googlemail.com
Web Site www.roofconsult.ltd.uk
VAT No: 781 5632 14

Design Calculations

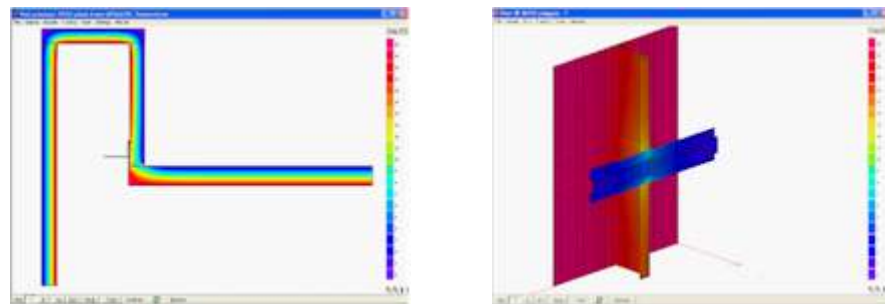
Wind loading and fixing requirements

Wind load calculations carried out in accordance with the requirements of NA to BS EN 1991-1-4:2005 + A1:2010 the UK National Annex to Eurocode 1 – Actions on structures Part 1-4: Fixings numbers can be calculated for mechanically fixed flat roof systems profiled sheeting & cladding and composite panels.



U value and thermal bridging to comply with Part L

The calculations are being carried out using finite element analysis computer program HEAT2 & Heat 3. These programs are fully compatible with BS EN ISO 10211-1:1996 Thermal bridging in building construction - Heat flows and surface temperatures Part 1. General calculation methods and so meets the requirements of Approved document L.



Roof drainage and gutter design

Drainage calculations are carried out in accordance with the requirements of BS EN 12056 -3:2000 Gravity drainage systems inside buildings - Part 3: Roof drainage layout and calculation for eaves, parapet, valley gutters and flat roofs.



Condensation risk analysis

The calculations were carried out using industry recognised software JPA Designer from JPA Technical in accordance with BS 5250:2011 Code of practice for control of condensation in buildings. The equations used are from BS EN ISO 13788:2002 Hygrothermal performance of building components and building elements. Internal surface temperature to avoid critical surface humidity and interstitial condensation.



